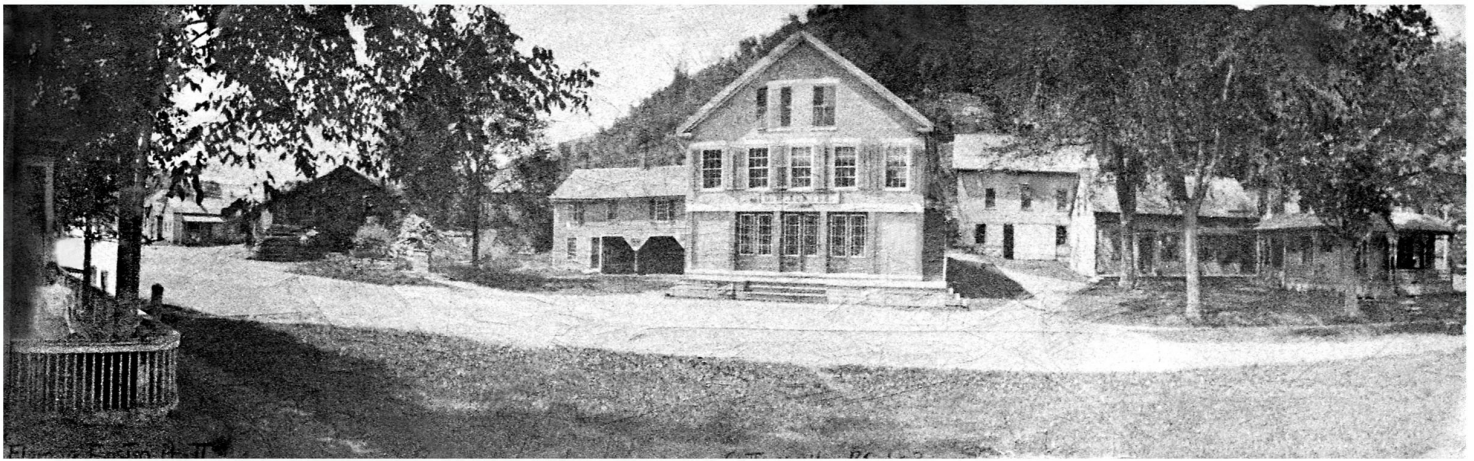




Times Past

Shrewsbury Historical Society
Newsletter

Unsolved Mystery at “Old Brick”



The Old Brick store in the village of Cuttingsville, town of Shrewsbury, county of Rutland – Therein lies a mystery of who was the artist that drew the satirical, political figures on the plaster walls on the 3rd floor? How long ago did this happen?

Not too many residents know about these remarkable 3 and ½ to 4 feet tall charcoal drawings. There are no papers available, no mention in history books, they just seem to be there speaking of the era of strife in our country with a civil war, and a hint of Tammany Hall, of using animal features to make a point. They are satirically political, some humorous, and date back to the mid 1800s to early 1900s.

We know that the original store was built in 1845. In 1849, the railroad that had been surveyed and planned for a few years finally ventured through the hamlet of Cuttingsville. In 1854, two men owned the building by names of Robbins and Holden. In 1860 William Bucklin ran it. It was passed down to George Wellington Foster and then to his son, Fred Foster. Many remember the store and the eventual use as the Cuttingsville Post Office. No longer a post office, the current owner is Alan Ridlon, Jr.

The printed name “P. Nasby” on one of the drawings



is next to a male figure of what could be the famous journalist and satirist during the Civil War. Born in 1833, his real name was David Ross Locke and was a friend of Mark Twain's. He was known to be a
(Continued on Page Six)

President's Note

Special thanks to our officers, trustees and members, and everyone who visited and support our museum.

Thank you to Ann and Kim Ridlon for the Memories calendar for 2016. To John Elwert who tends to the health of our finances and historical building, with the assistance of Al Ridlon, Sr. Thank you to all who serve on committees and to those who host the Sunday museum hours.

The SHS field trips included a tour of the Shrewsbury Volunteer Fire Dept. Headquarters on July 19, and the visit to the Historical Museum in Belmont on August 22. In the museum we held a Bake Sale on Aug. 8th, and on Oct. 25th, Nicholas Strom-Olsen presented a program on the Brown Bridge.

On November 15th, the SHS celebrated one of our founding members, Anne (Nancy) Spencer, by dedicating the museum to her.

In June of 2016, the SHS will participate in VT History Expo at Tunbridge. See you there!

Grace Brigham, President

SHS OFFICERS FOR 2016

At the annual meeting held Oct. 6, 2015, the following officers were elected: President, Grace Brigham; Vice-President, Marguerite Ponton, Treasurer, John Elwert; and Secretary, Ruth Winkler. Two Trustees voted in for a 3-year term: Grace Korzun and Conrad Winkler. Honorary Trustee: Anne (Nancy) Spencer.

Officers and Trustees 2015

<i>President</i>	Grace Brigham
<i>Vice-President</i>	Conrad Winkler
<i>Treasurer</i>	John Elwert
<i>Secretary</i>	Ruth Winkler

Trustees

Ann Ridlon	Richard Bettelli
Catherine Carrara	Fran Patten
Nancy Spencer	Grace Korzun
Honorary Trustee: Bud Clark	

Newsletter Editors

Ruth Winkler	Conrad Winkler
Photographer Brian Winkler	
ruthcon1@vermontel.net	

Please visit our website at:

www.shrewsburyhistoricalsociety.com

Shrewsbury Historical Society, Inc.

An all-volunteer non-profit organization

5419 Route 103

Cuttingsville, Vermont 05738

In Memoriam



Leonard Korzun, former Trustee and member of the Society, passed away on January 19, 2015. Len was a lover of past history and will always be remembered as having his "5 minutes of talk" at our monthly meetings about his latest ventures in visiting other historical societies and museums and libraries. He read textbooks and shared the historical items he found regarding Shrewsbury and its beginnings. The more Len learned, the more questions he would raise. His eyes would sparkle with each subject and then he would be reminded of another important find. Len was celebrated by his family and friends at an Open House in the Community Center on August 8th, which showed his life as a farmer, Selectman for over 3 decades, and his hobbies of building model airplanes and in particular, his wonderful photography. A man of many talents.

Dorothy Clarke Turnbeau, one of the Society's founding members in 1971, passed away on January 27, 2015. She was 97 years old. Dorothy was the wife of Jack Turnbeau, cartographer for a Society map of Shrewsbury. Mr. Turnbeau passed away in 1992. Mrs. Turnbeau, who lived at that time in RI, returned to celebrate the 25th Anniversary of the Society on June 3, 1996. She remarked that when she received the invitation, it brought back memories of many meetings held in various homes in the town.

Shirley J. Tinker, former member and supporter of the Historical Society, passed away on April 6, 2015. Shirley was 90 years old. She donated many artifacts through the years and kept in touch with the Society with her occasional hand-written notes.

Society Honors Nancy Spencer

Museum Dedicated to Nancy

On Sunday, November 15th, 2015, members, friends and family of Anne (Nancy) Spencer gathered together in the museum to honor Nancy, one of our founding members, by dedicating the museum to her. It was a beautiful fall day and everyone inside the museum anticipated her arrival. It was planned as a surprise for Nancy therefore her daughters DeeDee and Stephanie, and DeeDee's husband, Peter Erb led her into the vestibule of the museum where an elegant sign was hung declaring "Dedicated to Anne Felton Spencer" in shiny gold letters. Once seated inside, Nancy enjoyed chatting with members and friends.



Nancy's daughters point to sign

President Grace Brigham opened the festivities welcoming Nancy and recalled the days of the Society's beginnings back in 1971, the year Nancy and Arthur Patten decided to investigate the possibility of a Shrewsbury Historical Society. After years of collecting artifacts and meeting at different members' homes, in 1983/84 the Society, with the proceeds from the sale of our town's history book published by Nancy, was able to raise the 2nd floor attic of the library to accommodate the Society's first museum. Eventually, when the Society realized it had outgrown the room, approached the Community Church and negotiated with them for the

Cuttingsville Church, whereupon the acquisitions were transported from the library in 1999. Once moved, Nancy started the huge file system that contains information about our town and its residents, so important in genealogy research.



Nancy and Dawn Hance



Nancy and Ruth Winkler

Author Dawn Hance then spoke about the writing of the history book, *Shrewsbury, Vermont – Our Town As It Was*, and the help she was given by Nancy and others in researching material. Indeed, Nancy wrote the chapter on Farming, and ultimately, Dawn Hance dedicated the book: "For Anne Felton Spencer, whose encouragement and dedication to this project were invaluable."

More pictures on Page Four

Page Three

GIFTS TO SHS 2015



Fran Patten, Nancy and Dawn Hanc



Con Winkler, Donna Smith, Nancy and Michael Wells



Some of the guests gathering around the refreshment table

B-J Stewart, Cuttingsville: Framed VT House Rep. #HCR 46, certificate congratulating the family-owned John C. Stewart & Son, Inc. Ford Agency on the 100th anniversary beginning on June 17, 1915. Also a Ground Observer's Guide by Air Force Dept., dated Nov. 1, 1951.

Grace Brigham, Cuttingsville: Glass maple syrup bottle in form of Statue of Liberty given to her by Podge Sirjane for exhibit on statue in museum 2014.

Shirley Crossman Tinker, Rutland: Gold locket w/photo of daughter Judy at 4 mos. & Neil O. Tinker, in Navy during WWII. Neal saw daughter for first time in 1945. Also, a hand tatted ladies edged handkerchief, a pocket cook book of 1945 and 3 song books belonging to Neil Tinker.

Julanne Sharrow, Shrewsbury: 2 soil testing cans, 13 farm booklets, 1 bag asparagus seeds of 1952 and 2 H.P. Hood & Sons 1920 registered tags.

Anne Spencer, Shrewsbury: McGuffey's Revised Editions of Primer, and Eclectic Readers for 1st to 6th grades, along with article from The Smithsonian about same. Also twelve 19th century books.

Joan Stewart, Cuttingsville: "Guest Book" signed on July 9, 1991 at the "taking bridge down" party on the bridge in Cuttingsville. Also a few newspaper articles.

Julanne Sharrow, Shrewsbury: Bamboo easel found in attic.

Mary Pratt, Clinton, MA: Via e-mail, two photos of clothing worn by grandfather and great aunt as children.

VT Preservation Trust/Co-op at Pierce's Store, Northam: With permission from aforesaid, the Society was able to gather many historical artifacts from the Pierce's garage on Aug. 6 and 7, 2015, such as a wood and glass display case, military uniforms, men's jewelry, wood desk top and chair, books, ledgers, various posters, and photographs. Some of mentioned artifacts are on exhibit in the museum.

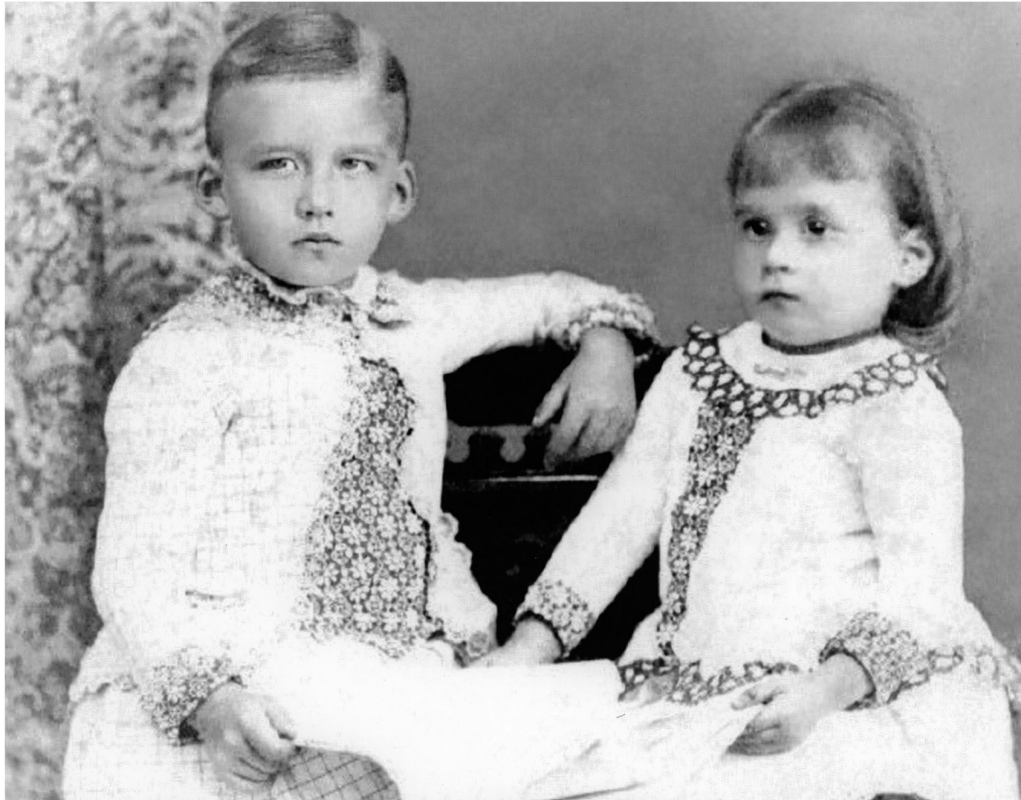
Rip Lincoln, Shrewsbury: Rock collection compiled by Rene Lincoln, which includes her booklets, reports, maps and research notes.

Julanne Sharrow, Shrewsbury: A berry pickin' tin with cover, a cookie display case which originally graced John C. Stewart's store in Cuttingsville; various photographs with unnamed subjects and two dated 1924 snapshots of schoolchildren, and a picnic.

19th Century Children's Fashion

One of our Sunday visitors this summer was Mary Pratt who now lives in Clinton, MA. Mary's parents owned the farm near the Pinkowski farm in North Clarendon. She was shown the Pratt file and when she opened it she was delighted to see the 8 x 10 black and white photo of her grandfather, John Holden Pratt and his sister, Lois C. Pratt taken when they were children. The photo, dated 1887, shows them wearing handmade brother/sister outfits. Mary explained that she has these same two outfits, now framed, hanging in her home. Mary then noticed a photo in the Town Clerk's exhibit showing her great aunt Lois (Pratt) Russell, who served Shrewsbury as its Town Clerk from 1930 to 1960.

A few days later, I received via e-mail, two digital photos of the brother/sister outfits, as shown here.



OLD BRICK from Page One

“great burly figure, uncouthly clothed, and looked like a simple old farmer”. He lectured throughout the country at the time of the Civil War.

And at this time, there was Thomas Nast. Born in 1840, he was a sketch artist, caricaturist, inventing the elephant symbol for the Republican party and the Tammany tiger.

And then there was the illustrator, naturalist and cartoonist Daniel Beard, born in 1850, who illustrated a number of books for Mark Twain. In his early career, he was an engineer and surveyor who after graduating in 1869, was hired by Sanborn Map Co. to draw commercial, industrial and residential sections of cities and towns in the northeast. A large scale map of Rutland, Vermont was published in October of 1879. Sanborn map makers worked anonymously, and their names never appeared on the maps they produced. This information could put Beard in the general area of Cuttingsville at the time of the drawings on the Old Brick’s walls. There is a similarity of the top button in the drawing with shining rays emanating from it. It also shows up on many of Beard’s other drawings through



his career. Beard’s drawing of the lion’s right hand holding a hat is almost exactly drawn the same way in an illustration he made for Mark Twain’s “A Connecticut Yankee in King Arthur’s Court”. The capital letter “P” in P. Nasby is the same in all of

Daniel Beard’s drawings. Could he have been residing in the Old Brick as he helped survey Rutland County for Sanborn Map Co. and drew the figures just for fun? Beard himself wrote in his autobiography that he joined the Sanborn Co. in 1872. “While working for them I not only saw all those places I had heard about but I made maps of them, made diagrams of all the homes in each town and city I visited. I took delight in putting into my records mention of real occupancy, genteel or disreputable. After four or five years of this work, I knew a lot about our people, saints and sinners, rich and poor.” Beard eventually became the founder of the Sons of Daniel Boone, and a co-founder of the Boy Scouts of America.



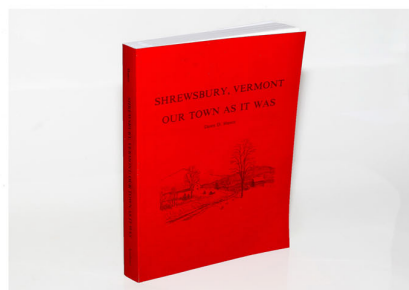
Or could it had been done by one of many political satirists of that time who traveled from town to town and drew famous figures on walls or easels to bring their points across?

Or could it have been an unknown talented railroad worker who stayed at the Old Brick during the building of the railroad? The Old Brick was designated as a “Pay Station” during that time. In the office today there is still located a safe whereby wages were kept for the railroad workers.

The drawings have been kept safe and perhaps one day, the mystery surrounding them will be solved.

All research for this article was accomplished by Jennifer Jo Lauri.

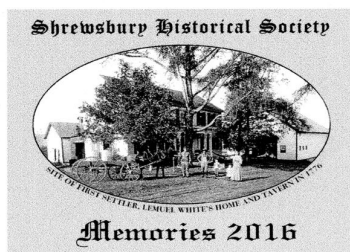
Ye Olde Holiday Gift Shoppe



History Book

“Shrewsbury, Vt. - Our Town As It Was” by Dawn D. Hance, has 320 pages, is soft covered in red with gold lettering. Early history of Shrewsbury up to 1910.

\$26. (Includes shipping)



2016 Calendar

This year’s collectable Shrewsbury Historical Society’s Memories 2016 Calendar with 15 vintage photographs of yesteryear.

\$17. (Includes shopping)



250th Envelope

Shrewsbury Historical Society’s commemorative envelope celebrating our town’s 250th Anniversary, with artwork by Grace Brigham and a special, unique postmark.

\$4. (Includes shipping)

**When ordering, please mail list of your items, name and address and check covering same to:
Shrewsbury Historical Society, 5419 Route 103, Cuttingsville, VT 05738**

Help Prerserve Shrewsbury’s History Shrewsbury Historical Society’s 2016 Annual Dues Request

The Society has come a long way in helping to preserve artifacts and display them for everyone to enjoy. Our exhibits rotate from year to year which is always interesting to those who visit the museum each year. In recent years, due to the Internet and our own website, we have seen a significant increase in the number of inquiries from folks researching their Shrewsbury ancestry. All such requests are answered.

Your support helps keep the museum viable, interesting and accessible. Your dues and donations will not only be used for the upkeep and care of the museum building, but will also help in the preservation of our town’s history for future generations. The SHS is an all-volunteer, non-profit organization.

Thanks for your support.

2016 MEMBERSHIP DUES

Please fill out this form and mail it with your check payable to the Shrewsbury Historical Society, Inc., c/o John Elwert, 499 Shunpike Rd., Cuttingsville, VT 05738.

Name _____

Individual \$10

Family \$15

Contributing \$30

Address _____

Life (Individual/Couple) \$125

Dues and donations are tax deductible.



Bob Snarski talks about early SVFD



100th Anniversary John C. Stewart & Son



Ann Ridlon, I., and Fran Patten at Bake Sale



Nicholas Strom/Olsen presents Brown Bridge program

**Shrewsbury Historical Society, Inc.
5419 Route 103
Cuttingsville, Vermont 05738**